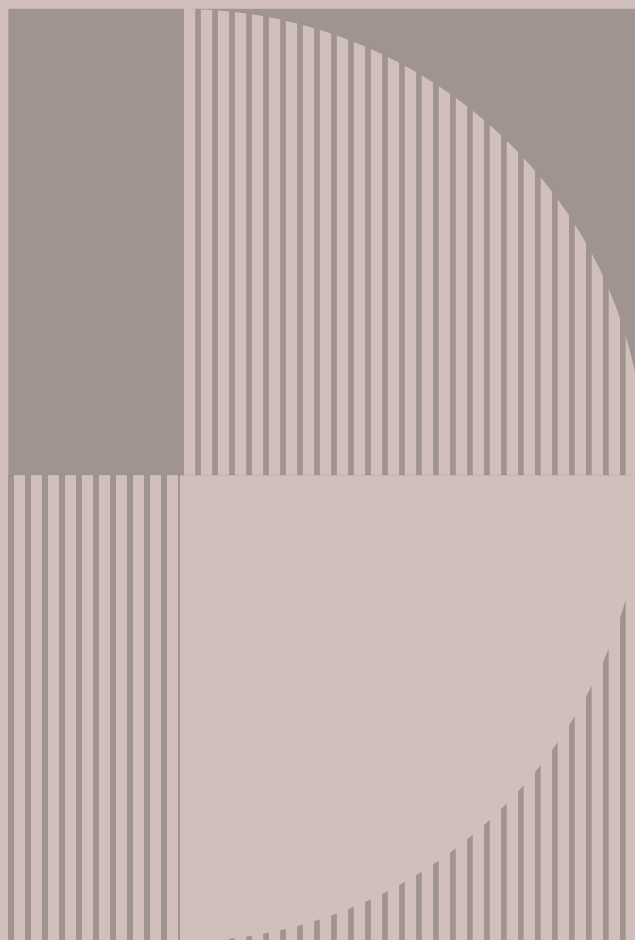


**MOTTO**

FUTURE SURFACES

NEW-AGE CREATION



**METTALIC**  
COLLECTION



**800x1600mm**

9mm Thickness

**MOTTO**  
FUTURE SURFACES

## ABOUT US

The grand inception of this pioneering organization took place more than a decade ago. Since its inception, Motto Group has become a leading Indian manufacturer and exporter of ceramic and vitrified tiles all around the globe. Its manufacturing unit in Morbi, Gujarat has a production capacity of

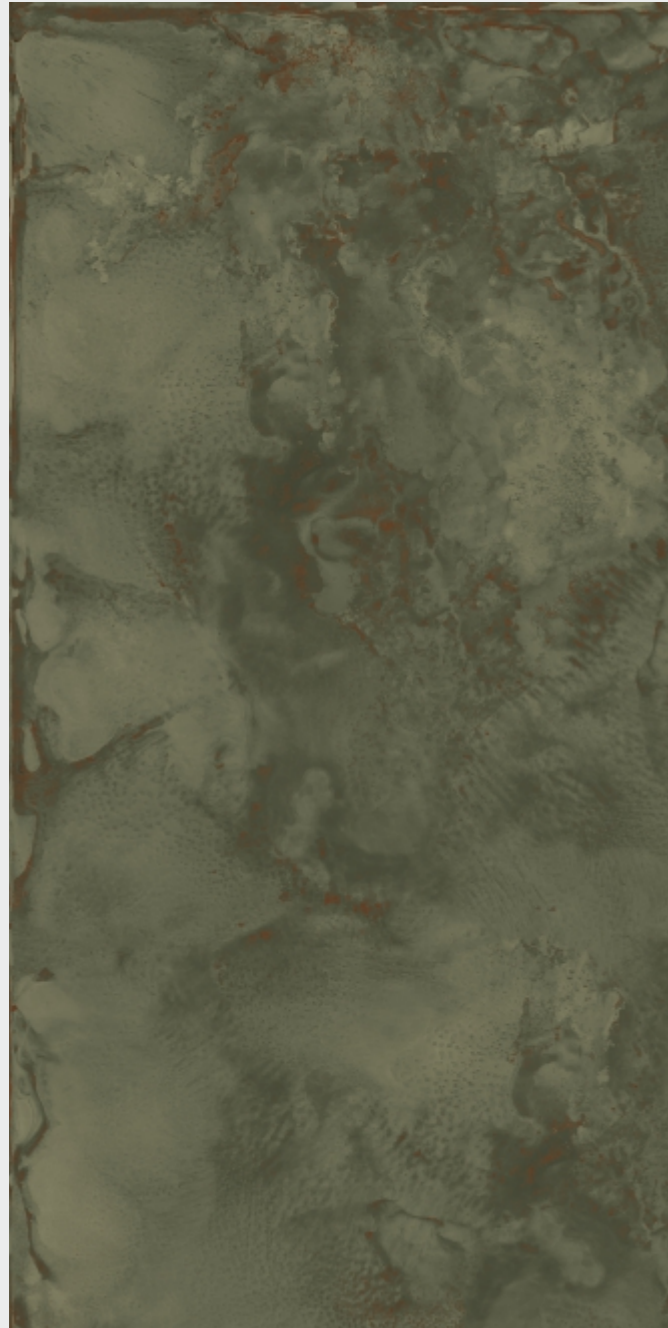
13,000 Sq. Mtrs. per day. With the latest technologies and modern machinery in its infrastructure, the group has been able to increase its production capacity significantly since its establishment. Motto is not only stunning the world with its enamoring product range but is also letting its customers.





MARBLE +

NEW ARRIVAL



**METAL GREEN**

Available size:  
800x1600mm

Finish  
Mettalic

Thickness  
9mm

Design  
Random (4 Phase)

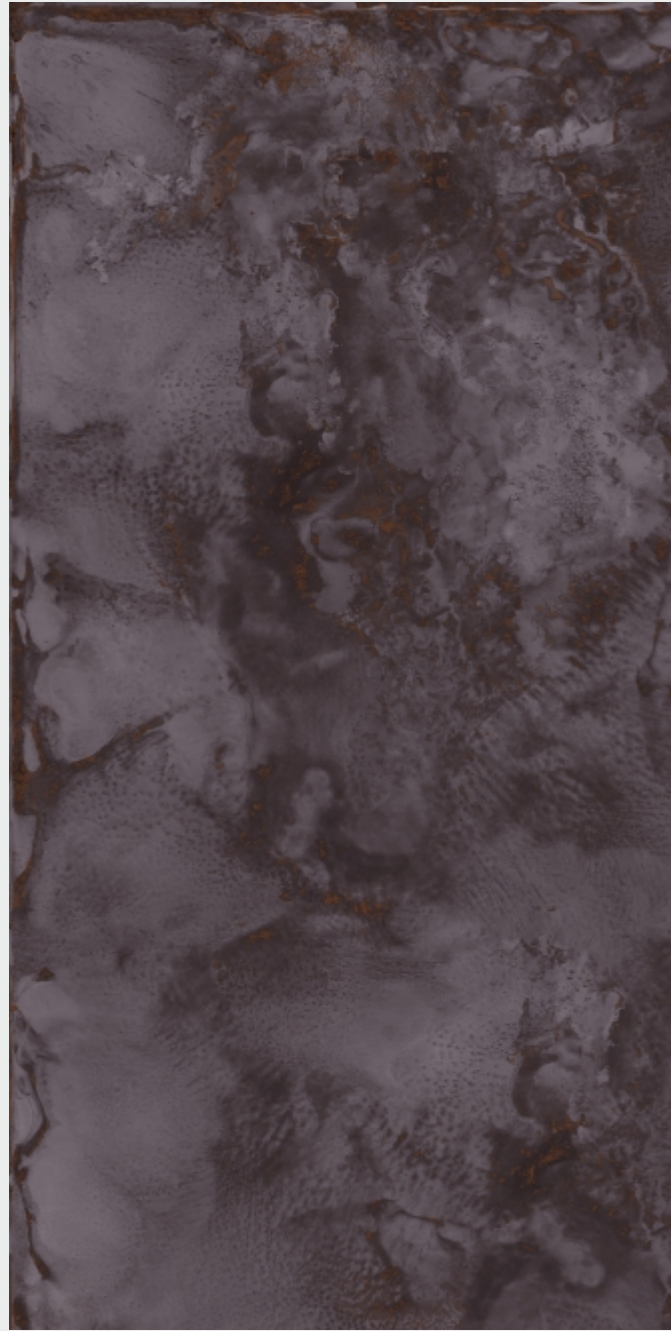


**MOTTO**  
FUTURE SURFACES



MARBLE +

NEW ARRIVAL



### METAL PEARL

Available size:  
800x1600mm

Thickness  
9mm

Finish  
Metallic

Design  
Random (4 Phase)

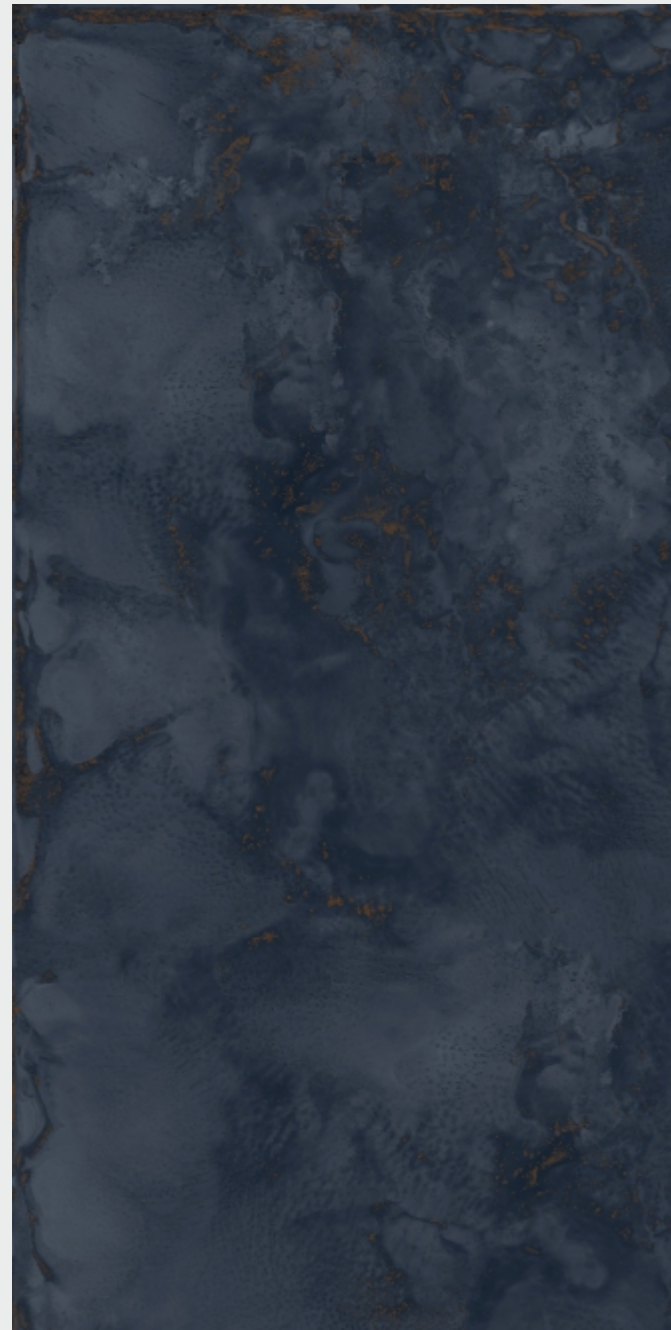


**MOTTO**  
FUTURE SURFACES



MARBLE +

NEW ARRIVAL



**METAL DARK BLUE**

Available size:  
800x1600mm

Finish  
Metallic

Thickness  
9mm

Design  
Random (4 Phase)

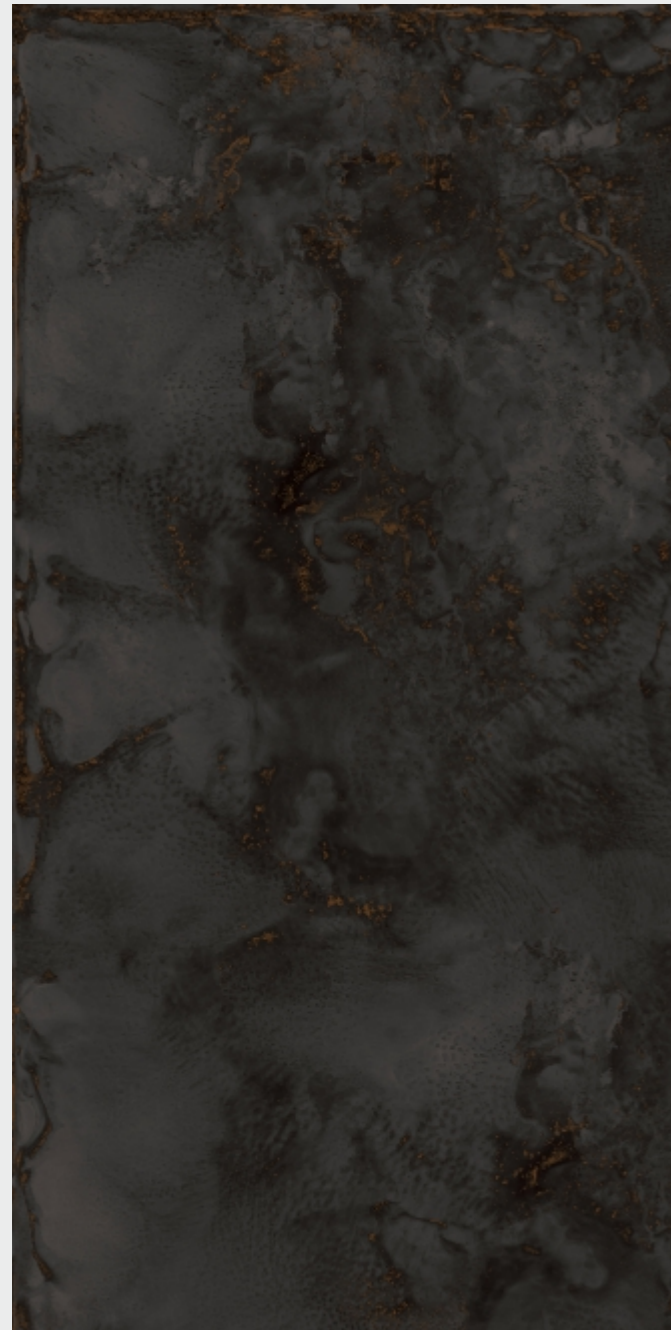


**MOTTO**  
FUTURE SURFACES



MARBLE +

NEW ARRIVAL



**METAL BLACK**

Available size:  
800x1600mm

Finish  
Metallic

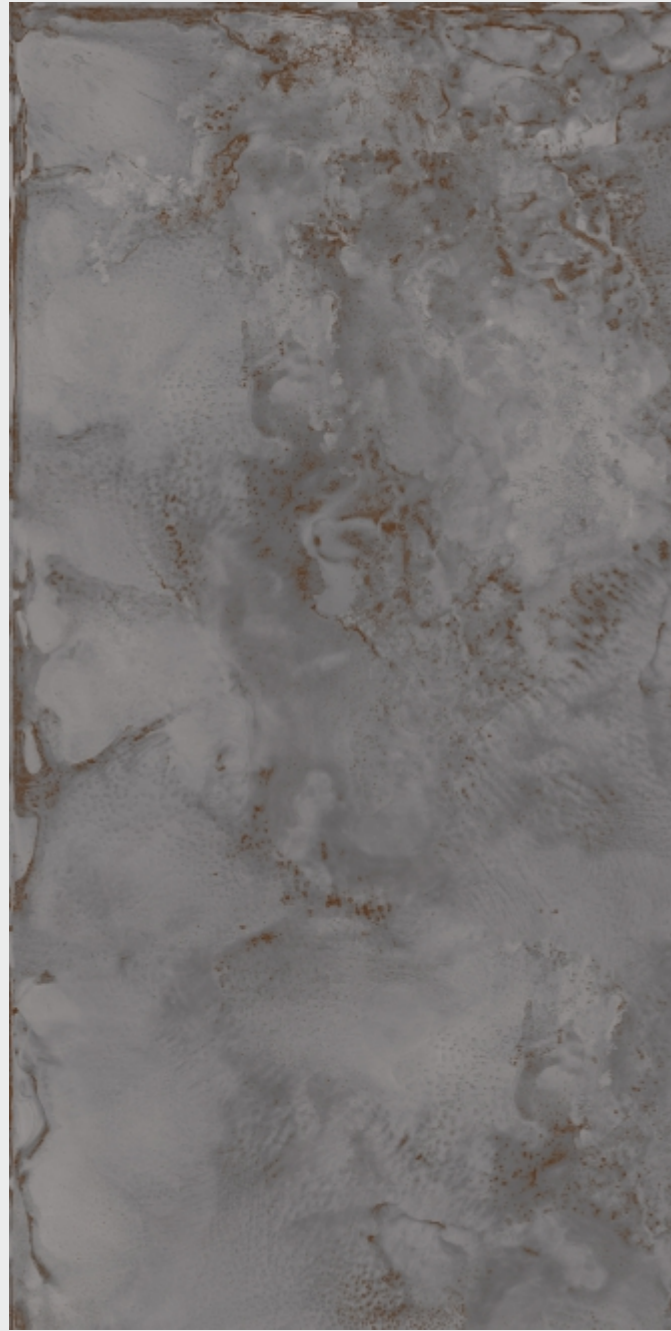
Thickness  
9mm

Design  
Random (4 Phase)



MARBLE +

NEW ARRIVAL



**METAL GREY**

Available size:  
800x1600mm

Thickness  
9mm

Finish  
Metallic

Design  
Random (4 Phase)

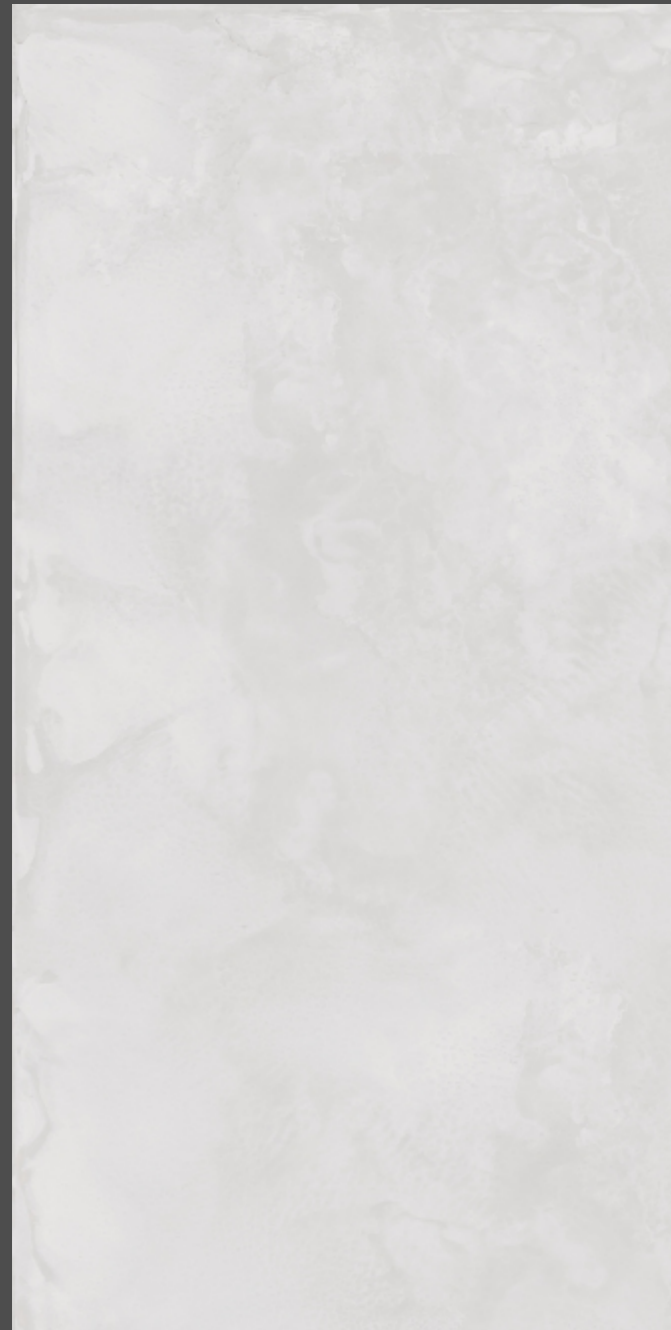


**MOTTO**  
FUTURE SURFACES



MARBLE +

NEW ARRIVAL



METAL SILVER

Available size:  
800x1600mm

Finish  
Metallic

Thickness  
9mm

Design  
Random (4 Phase)



MARBLE +

NEW ARRIVAL



METAL BEIGE

Available size:  
800x1600mm

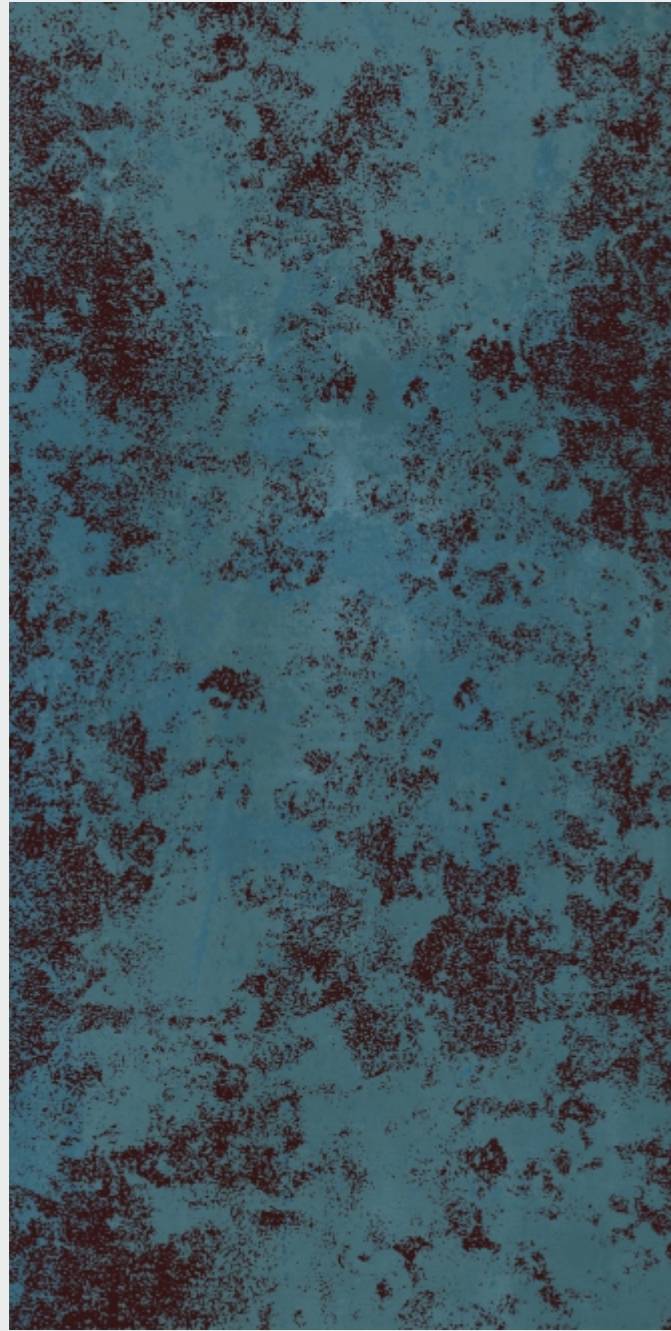
Finish  
Metallic

Thickness  
9mm

Design  
Random (4 Phase)



MARBLE +



IRON AQUA

Available size:  
800x1600mm

Thickness  
9mm

Finish  
Mettalic

Design  
Random (3 Phase)

MOTTO  
FUTURE SURFACES





MARBLE +



IRON CHOCO

Available size:  
800x1600mm

Thickness  
9mm

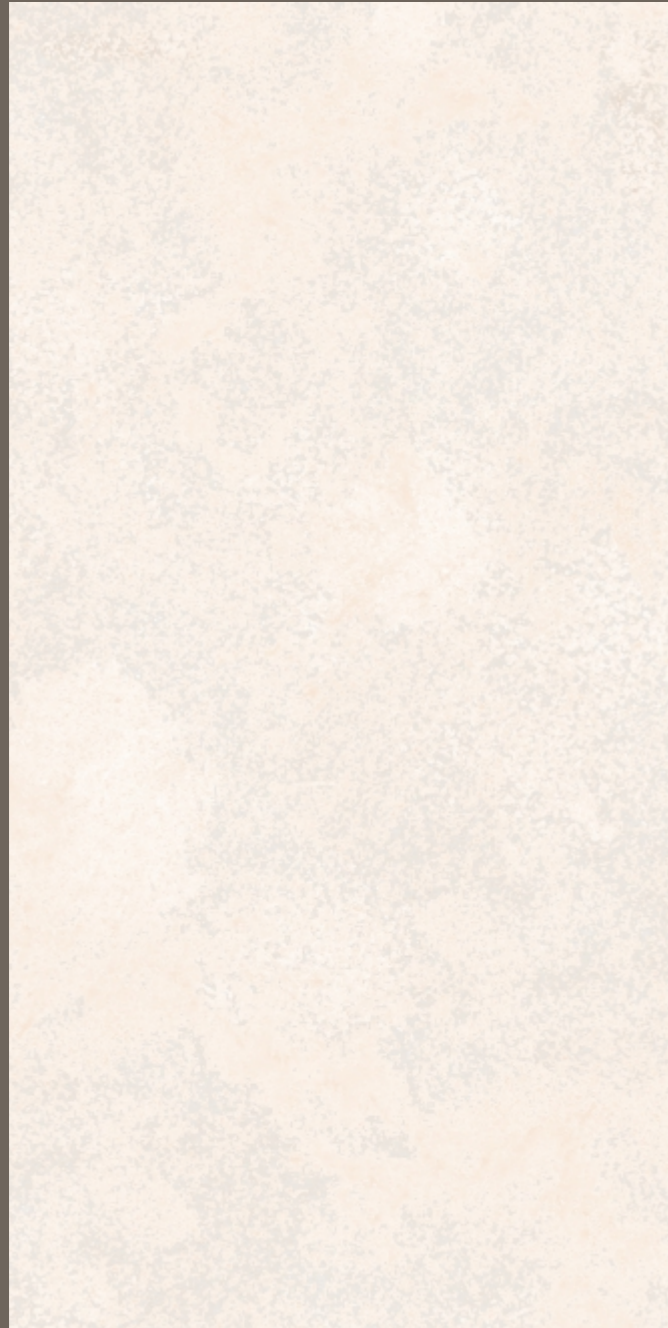
Finish  
Metallic

Design  
Random (3 Phase)





MARBLE +



IRON IVORY

Available size:  
800x1600mm

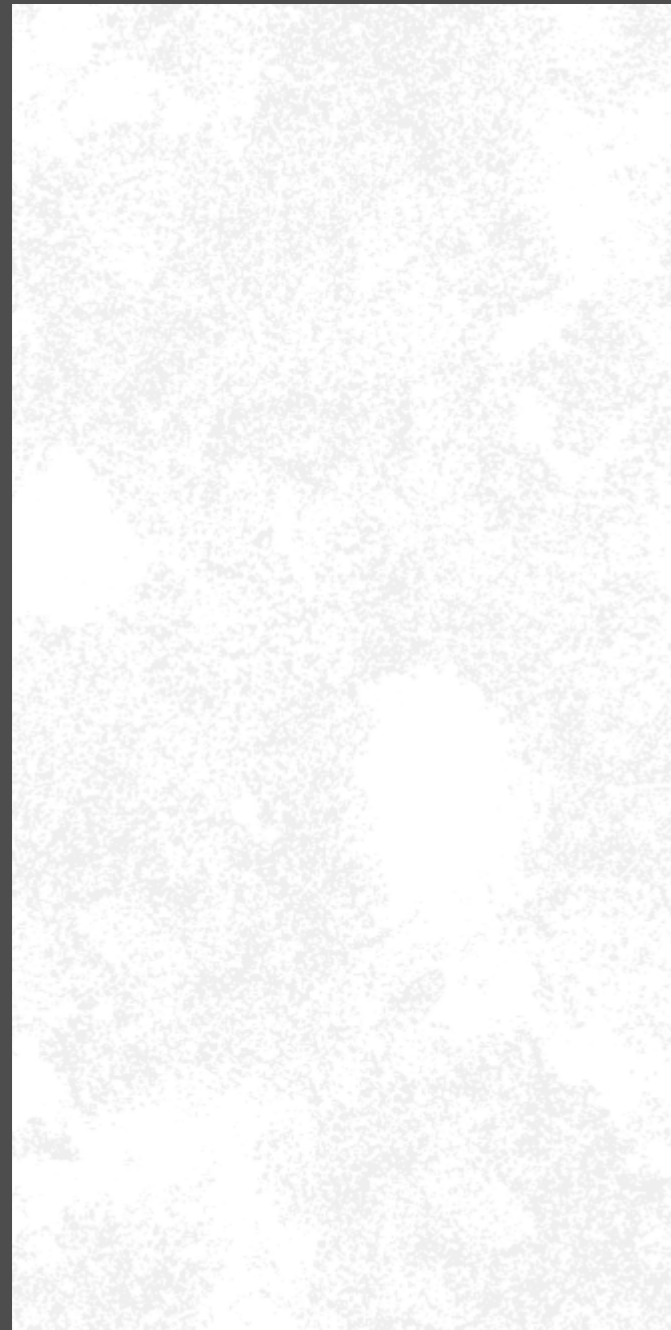
Finish  
Metallic

Thickness  
9mm

Design  
Random (3 Phase)



MARBLE +



IRON WHITE

Available size:  
800x1600mm

Finish  
Mettalic

Thickness  
9mm

Design  
Random (3 Phase)



## APPLICATIONS

Leading towards the enhancement of our lives, we apt to do the impossible. Same goes round here as well. Utilizing the state of the art technology, we are here to mesmerize you with surfaces which are applicable in many various spaces. These high end surfaces can be applied on the spaces which appreciates durability & endurance.



RESIDENTIAL



RESTAURANT



GARDEN & POOL



SHOPS



HOTELS



MALLS



OFFICE



PUBLIC SPACES

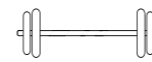


TRAIN STATION



AIRPORTS

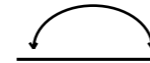
## FEATURES



**STRONG** : Strength is the inherent feature of our indeed creation. We strive to deliver a melange of strength, craftsmanship, and size delivering function benefits as per the requirement of ambience



**LIGHT** : Subtleness with strong identity yet light in weight. Create interiors that interact with the architectural space with a refined look



**SELF LEVELLING** : This next level feature create a smooth and even surface which makes it the most convenient among all.

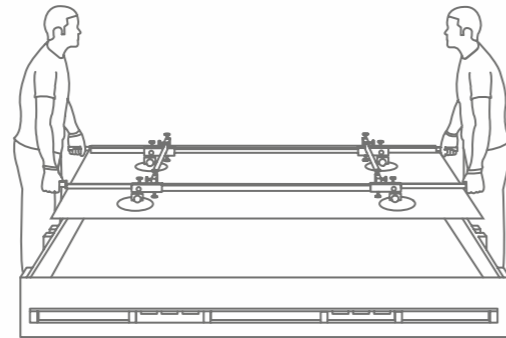
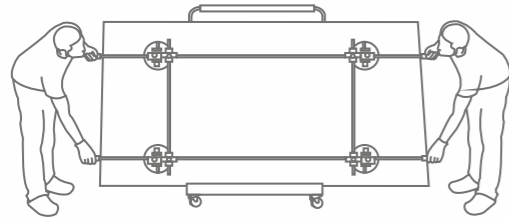


**GREEN** : At Motto Group, we are committed to the environment and recognize that sustainability is an significant and and crucial part of our journey, we make it happen by producing trendsetting tiles in a zero-waste manufacturing process.

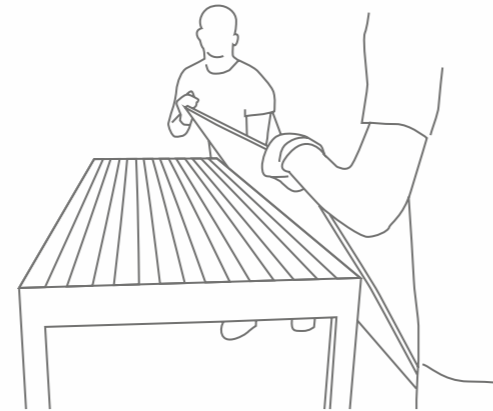
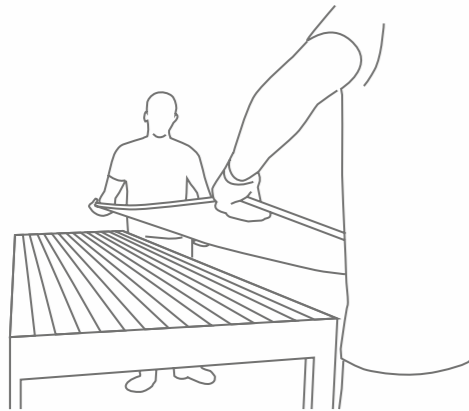


## MANUALLY TRANSPORTING IMMEDIATE

### MOVING A IMMEDIATE TILE



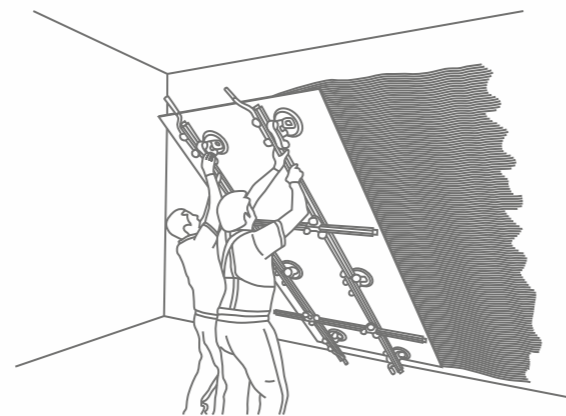
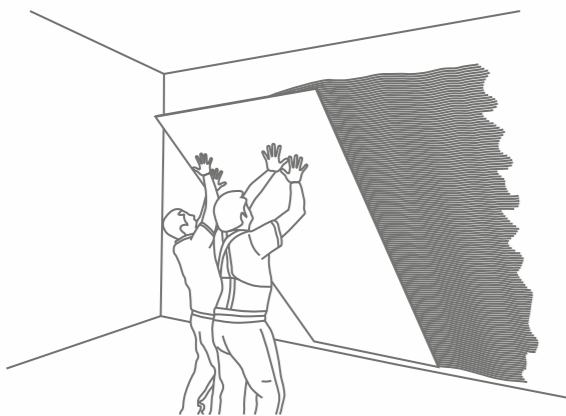
### RAISING A IMMEDIATE TILE ONTO A BENCH



✗ INCORRECT

✓ CORRECT

### HANDLING IMMEDIATE TILE FOR WALL

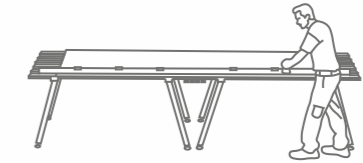


✗ INCORRECT

✓ CORRECT

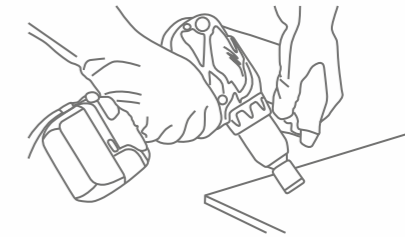
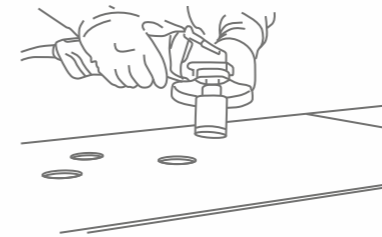
## WORKING WITH THE VARIOUS VERSIONS OF IMMEDIATE

### CUTTING WITH DIAMOND DISCS



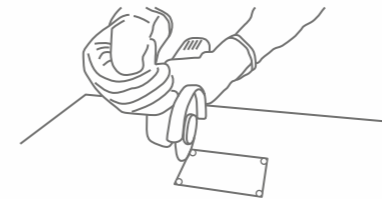
Our products can be cut using diamond discs fitted onto the hand-held electrical grinding machine. The speed of Disc rotation must be high (>10000 RPM) and should have a low feed rate (< 1 m/min). It may be required to cool the disc with water. Recommended discs are the thin types generally used for cutting porcelain stoneware. The surface should be kept on a FLAT base while cutting without any gap underneath

### DRILLING



You can use cutting discs fitted to battery-operated screwdrivers or angle grinders, electrical drills as an alternative.

### INTERNAL CUT / L-SHAPED CUT

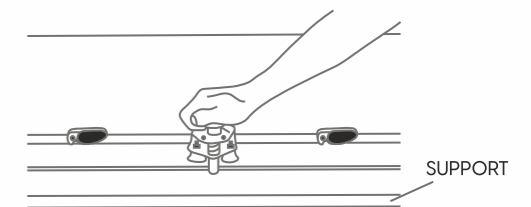
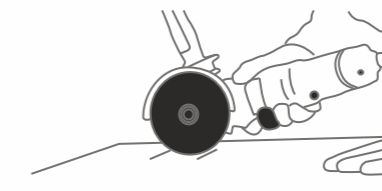


To get internal and L-shaped corners & to reduce the risk of breakage, round off the vertex of the internal corner using bits with a radius of at least 5mm. Then cut with diamond discs, be cautious to stop moving the cutting tool forward. To drill and cut using diamond discs, follow the instructions provided above.

When using these tools:

- Cool the point being drilled with water
- Don't put too much pressure and bear in mind the resistance of the type of laminated stoneware you are working on
- If you are using tungsten bits, start drilling at a low speed
- If you are using drills or screwdrivers, do not select hammering mode

### EDGE-FINISHING



SUPPORT



## CLEANING & MAINTENCE

Our products are non porous (due to their high quality raw materials, stringent production parameters and state of the art technology), hence any dust or deposited waste cannot penetrate the surface.

For most cases only a damp cloth is sufficient for cleaning.

Regular cleaning highlights the aesthetic features of the surface and gives it exceptional shine.

For highly aggressive cleaning caused by some common food and substances follow the table below.

TYPE OF STAIN	CHEMICAL PRODUCT	EXAMPLE
Grease	Alkaline - Solvent	Detergent
Oil	Solvent	Ammonia, Backing Soda
Ink	Oxidant - Solvent	Alcohol, Liquid Bleach, Nail Paint Remover
Rust	Acid	Hydrochloric Acid, Vinegar, Red Harpic
Lime	Acid	Descaling Reagent, Hydro Chloric Acid
Cement	Acid	Hydro Chloric Acid
Wine	Alkaline	Ammonia, Liquid Bleach
Coffee	Alkaline - Solvent	Ammonia, Liquid Bleach
Rubber	Solvent	Alcohol, Thinner
Plaster	Acid	Hydro Chloric Acid
Candle Wax	Solvent	Alcohol, Thinner
Iodine	Oxidant	Liquid Bleach
Blood	Oxidant	Liquid Bleach
Ice Cream	Alkaline	Liquid Bleach

Note: It is recommended that any kind of stain needs to get clean immediately / as soon as possible.

## PACKING DEATILS

DIMENSION ( mm )	SLAB	SQ. METER	SQ. FEET	WEIGHT ( APPROX )
800x1600	2	2.56	27.55	52 Kgs.

## TECHNICAL SPECIFICATION

CHARACTERISTIC	STANDARD AS PER ISO-13006/2018 En14411 gr.bla	MOTTO VALUE	TEST METHOD
<b>Regulatory Properties</b>			
Deviation in Length & Width	±0.5%	±0.2%	ISO 10545-2
Deviation in Thickness	±5%	±5%	ISO 10545-2
Straightness of Sides	±0.5%	±0.2%	ISO 10545-2
Rectangularity	±0.5%	±0.2%	ISO 10545-2
Surface Flatness	±0.5%	±0.3%	ISO 10545-2
Colour Difference	ΔE<1.00	ΔE<0.30	ISO 10545-16
Glossiness	As per Mfg.	As per Mfg.	Gloss Meter 60°
<b>Structural Properties</b>			
Water Absorption	≤0.5 %	≤0.3 %	ISO 10545-3
Apparent Density	As Per Mfg.	>2.20 g/cc	ISO 10545-3
<b>Massive Mechanical Properties</b>			
Modulus of Repture	Min.35N/mm <sup>2</sup>	Min.40N/mm <sup>2</sup>	ISO 10545-4
Breaking Strength	Min. 1300 N	Min. 2000 N	ISO 10545-4
Impact Resistance	As per Mfg.	Min. 0.55	ISO 10545-4
<b>Surface Mechanical Properties</b>			
Surface Abrasion Resistance	As per Mfg.	Min. class 3	ISO 10545-7
Moh's Hardness	As per Mfg.	Min. class 4	BS EN 15771
<b>Thermo Hygrometric Properties</b>			
Frost Resistance	As Per Mfg.	Frost Proof	ISO 10545-12
Thermal Shock Resistance	Min. 10 Cycle	Min. 10 Cycle	ISO 10545-9
Moisture Expansion	Max. 0.6mm/m	Max. 0.02mm/m	ISO 10545-10
Thermal Expansion	Max. 9.0 x 10 <sup>-6</sup>	Max. 6.0x10 <sup>-6</sup>	ISO 10545-8
<b>Chemical Properties</b>			
Chemical Resistance	As Per Mfg.	No Damage	ISO 10545-13
Stain Resistance	Resistant	Resistant	ISO 10545-14
<b>Safety Properties</b>			
Slip Resistance	As per Mfg.	N. A.	DIN 51130
Fire Resistance	As per Mfg.	Fire Proof	N. A.





**MOTTO GROUP**

8-A, National Highway, Sartanpar Road, At. Sartanpar,  
Ta. Wankaner, Morbi - 363 621, Gujarat, INDIA

**Mail.** [info@mottogroup.in](mailto:info@mottogroup.in), **Web.** [www.mottogroup.in](http://www.mottogroup.in)

**Toll-free.** 1800 123 2124

**Call.** +91 95123 80072